




Blackthorn Road, Wymondham, NR18 0PY

Offers In Region Of £290,000

 3  2  1

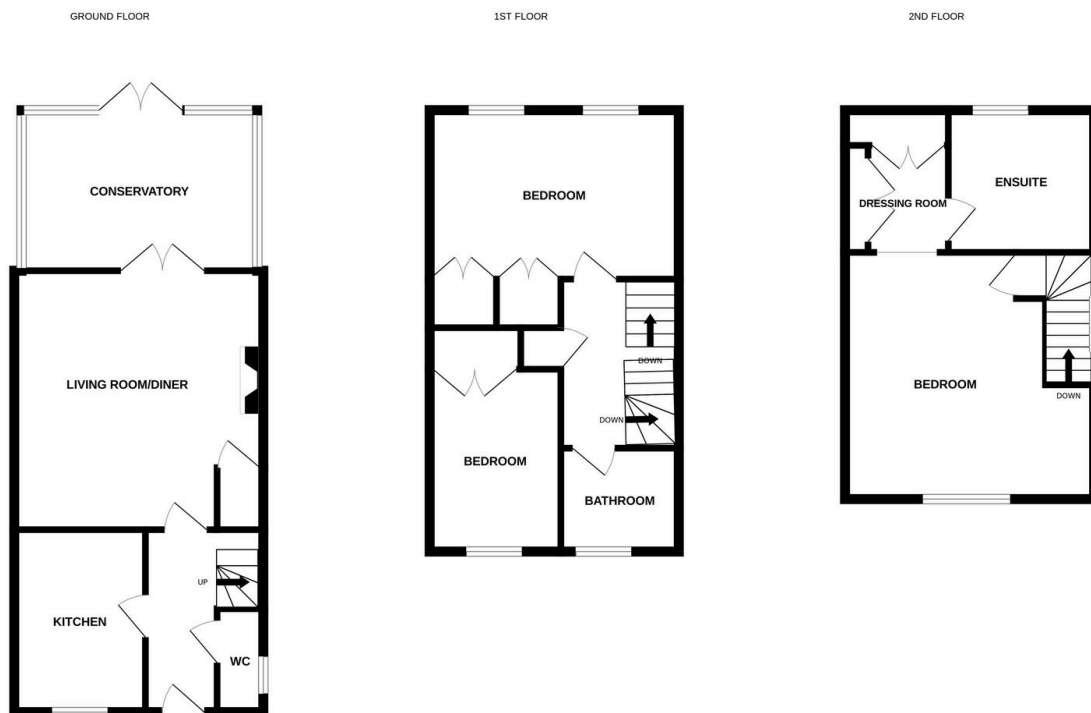


Moneyproperties proudly presents this three storey three bedroom town house on the popular Harts Farm development with convenience store, take away, walking distance from sought after local schools and easy access to the town centre with all its amenities, the main A11 for those commuting to Norwich and Cambridge by road and the towns railway station with regular services to Norwich and Cambridge.

Tenure: Freehold EPC: C Council Tax: C

Key Features

- Well appointed three bedroom three storey town house
- Offering approximately 1200 sq ft of living space including conservatory
- Close to local shops, supermarkets and town centre with all its amenities
- Easy access to the main A11 for those commuting to work by car
- No forward chain quick sale possible as sellers moving overseas to work
- Single garage and parking offroad for 2/3 cars
- Three double bedrooms all with built in wardrobes, bedroom one has an ensuite
- Walking distance from sought after local schools
- Walking distance from the towns railway station with regular services to Norwich and Cambridge
- See our full online listing for further details including flood risk, broadband speed and other material information.



Whilst every attempt has been made to ensure the accuracy of the floorplan contained here, measurements of doors, windows, rooms and any other items are approximate and no responsibility is taken for any error, omission or mis-statement. This plan is for illustrative purposes only and should be used as such by any prospective purchaser. The services, systems and appliances shown have not been tested and no guarantee as to their operability or efficiency can be given.
Made with Metropix ©2024